

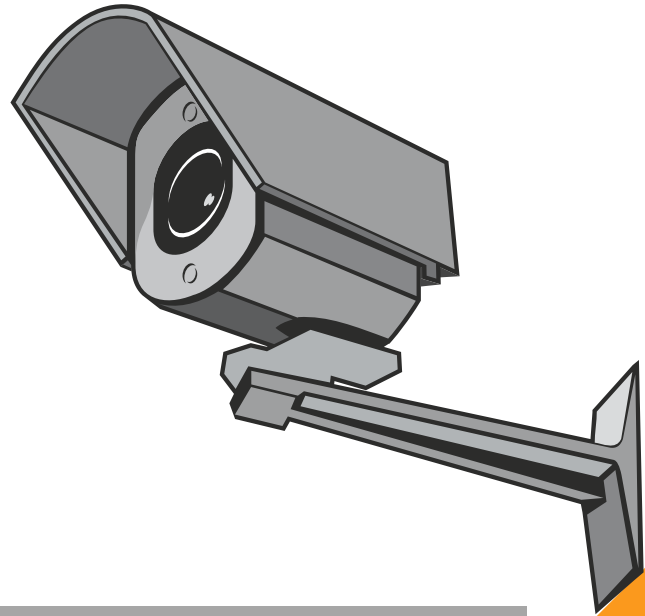
LEVEL 2 ONLINE CCTV DESIGN AND INSTALLATION COURSE



**TAKE THE NEXT STEP IN
YOUR CAREER WITH CUBE.**

WHAT YOU NEED TO KNOW

This course is ideal if you are looking to start as a CCTV installer or wish to change career from another building or electrical trade. The course has been designed for candidates wanting a viable entry route into the electronic security surveillance industry.



This course would be perfect for installation/service engineers and managers, or anyone interested in the installation and maintenance of CCTV systems.

Aims to provide students with a solid understanding of video security surveillance solutions.

Covers analogue, IP and hybrid video surveillance system design, installation and maintenance.

WHAT'S INCLUDED?

40 Hours



High-quality teaching from experienced practitioners

Specialist career management services



**A copy of the official
Cube handbook
(PDF File)**

**Downloadable
course
materials**

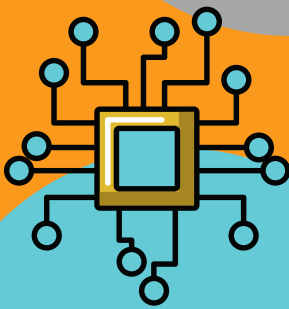
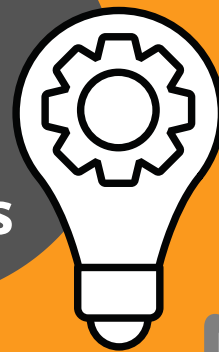
**Assignment marking
and thorough
feedback**

THIS QUALIFICATION PROVIDES AN UNDERSTANDING OF CCTV DESIGN AND INSTALLATION WHICH INCLUDES:



Introduction to CCTV installation

Analogue and digital systems



Requirements analysis and system design

CCTV tools and resources



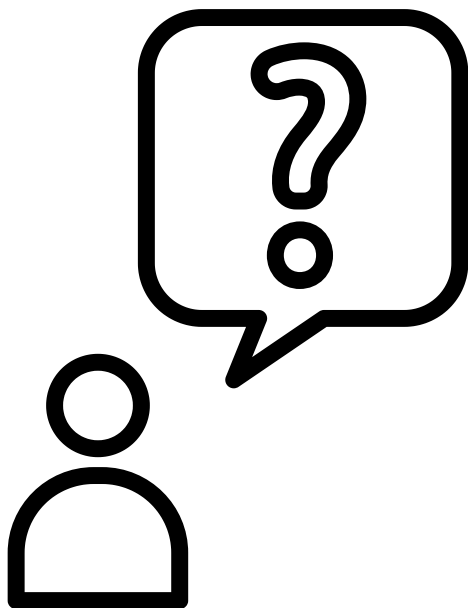
CCTV power requirements and wiring

Installation techniques and best practices



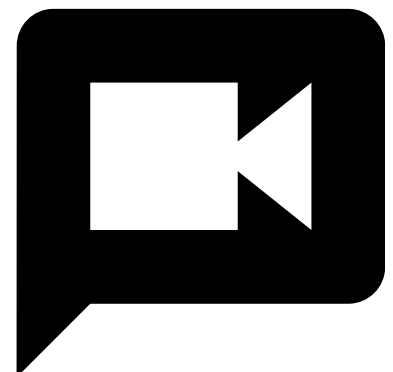
Why Cube?

The Cube course, unlike other online courses, provides a special learning experience. Sessions may be read, listened to, or watched on mobile phones or desktops. This helps you to study whenever and wherever you want.



Learners can receive a list of basic tool kits to purchase as well as a list of preferred suppliers. You should practise them at home when you first start the course. Every month, you will have one live session with your tutor during which you will be able to ask questions about your course.

You will never get bored with this interactive course that includes videos, texts, audios and quizzes to help you practise and assess what you've learned.



Entry Requirements

To enrol on the course, you must be 18 or over. There are no formal qualifications required as prerequisites for the course, however it is recommended that students have basic numeracy and a background in electrical, such as a Level 2 Electrical Maintenance Skills, or experience in electrical maintenance. This is due to the course requiring installers to have a sound knowledge of earthing and wiring regulation, to not compromise safety.

Examination

At the end of the course, you will be required to sit for an online multiple choice question test. Your test will be assessed automatically and immediately. You will instantly know whether you have been successful or not. Before sitting for your final exam you will have the opportunity to test your proficiency with a mock exam.

Certification

After completing and passing the course successfully, you will obtain a Level 2 Award in CCTV Installation & Design. Certificates can be obtained either in hard copy, at a cost of £39, or in a downloadable PDF format for free.

1

Introduction to CCTV Installation

- Introduction to CCTV
- Role of CCTV in the modern world
- Stakeholders of a security surveillance system
- Basic components of an analogue and digital CCTV system

2

Analogue & Digital Systems

- Introduction to video signalling
- CCD, CMOS technology, interlaced & progressive scanning, NTSC & PAL resolutions
- Guidelines for selecting a CCTV camera
- High-definition television (HDTV) resolution, megapixel resolutions, wide dynamic range
- Digital CCTV systems vs analogue CCTV systems
- IP addressing, data transport protocols for network video, Power over Ethernet, video codec

3

Requirements Analysis & System Design

- CCTV site survey report
- CCTV design
- Writing a CCTV system specification
- Cost analysis

4

CCTV Power Requirements & Wiring

- Ohm's Law
- Voltage drop and amperage requirements
- CE mark
- Low voltage distribution & Electromagnetic Compatibility (EMC) considerations

5

Installation Techniques & Best Practices

- Inspection & testing of low voltage electrical installations
- Cable containment
- Small power systems
- Uninterruptible Power Supplies (UPS)
- Lighting protection
- Reference to British standards

6

CCTV Tools & Resources

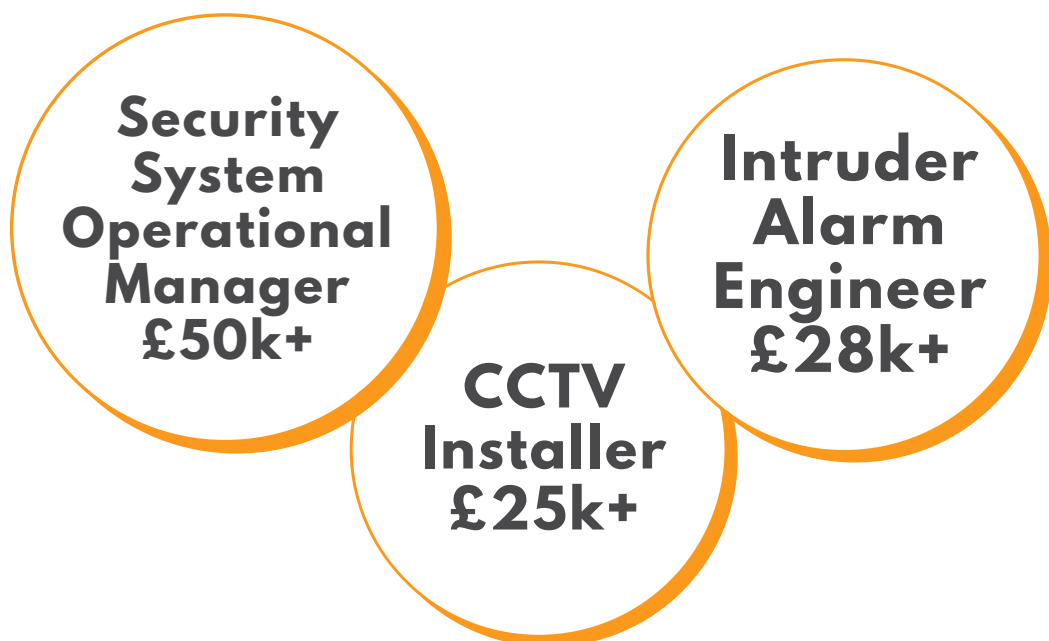
- Introduction to CCTV tools
- Testing chart
- Maintenance checklist

Career Opportunities & Progression

The Cube Award in CCTV Design & Installation will give you a professionally recognised certificate and the ability to apply for job vacancies, both in the UK and abroad.

As you progress with your studies and experience, you will open more career opportunities, and will be able to apply for roles with a higher salaries.

Our recruitment team have exclusive industry contacts to help our trainees take the next step in the career after their training. We also offer CV advice and help getting experience.



Next Steps

Still not sure?

Read feedback from our brilliant students on our website (did you know we have a 98% satisfaction rate?).

Got questions?

Check out our FAQs on our website.

Ready to take the next step in your career?

learninstallation.co.uk

enquiries@cuberecruitment.co.uk

0333 006 4005

