

COURSE BROCHURE



Career courses in cyber security and more...



11th Floor
Beaufort House
15 St Botolph Street
London, EC3A 7BB

020 7183 8790

support@redbridgecourses.com

Why do a Career Course with Redbridge?



Access 24/7 tutor support

If you ever get stuck during your [Career Course](#), tutor support is available 24/7, 363 days of the year. Tutors are able to support you via live chat, email, phone, and even video tutorial where necessary.



Learn in your own time

With our self-paced learning style, you decide how many hours you want to study each week. You also have the ability to go back and revise areas you want to spend more time on before taking your exams.



Access our Career Program

We will help place you into a job upon the completion of your course. Part of this service will involve cover letter and CV creation, full career assessment, and short-listing for job roles, plus more.



Pay your course in installments

Prefer to spread your course costs? Through our [Course Finance](#) scheme, you can pay in easy monthly installments over a period that suits you from 1-12 months, interest free. No credit agreement required. Just one application to complete.



Add experience to your CV

[Live Practice Labs](#) allow you to put your skills to the test in a simulated online environment. Many IT employers and recruitment agents consider time in a live lab as a valuable asset and count it as experience on your CV.



All-inclusive learning

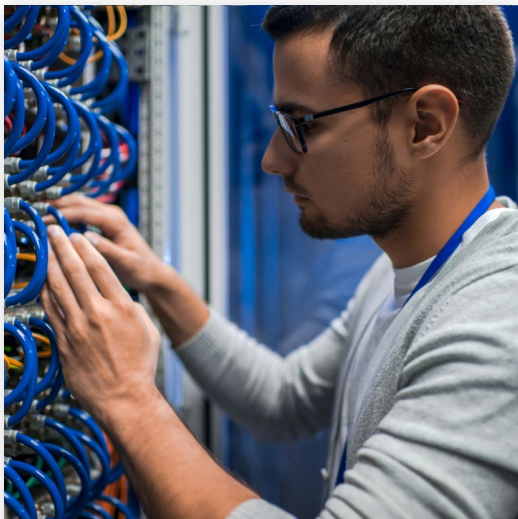
Our [Career Courses](#) cover everything you need to get your first IT job. This includes course material, [Live Practice Labs](#), practice exams, official certification exams, 24/7 tutor support, and access to our [Career Program](#).

Career Courses

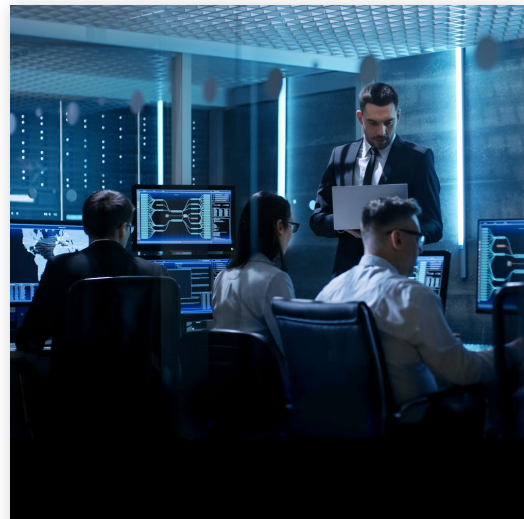


Start your IT career from
£125 per month
over 12 months

Call 020 7183 8790 for details
Mon-Fri, 9am-6pm



Cisco Networking for Beginners
with Career Program



Cyber Security for Beginners
with Career Program



IT Support for Beginners
with Career Program



Microsoft Office Specialist
with Career Program

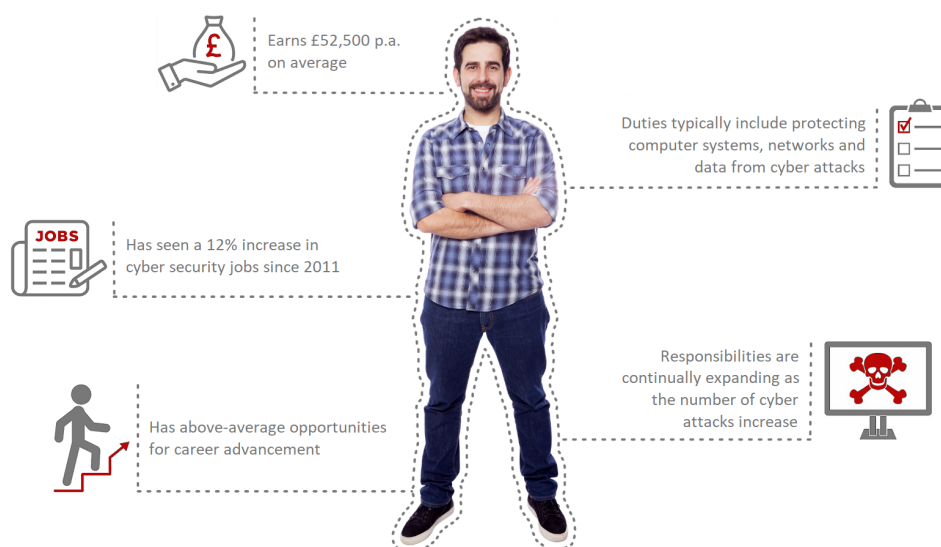
Featured Career Course

Cyber Security for Beginners with Career Program

If you've ever considered working within the cyber security industry, but felt you lacked the knowledge or skills to launch your career, this might be what you're looking for.

This course is aimed at absolute beginners to IT who want to start a career in cyber security or just develop their skills in this area. The course assumes you have no technical knowledge of IT whatsoever. To understand cyber security and practice it at a technical level, you must first possess an understanding of basic IT literacy as well as certain technologies such as computer systems and networks, which will be taught through this course.

The Average Cyber Security Analyst Profile:



Potential future career paths

- Cyber Security Engineer
- Cyber Security Analyst
- Cyber Security Investigator
- IT Security Consultant
- Network Support Engineer
- Network Configuration Engineer and more

Example of course certification



You'll learn about...

- Cyber Security Awareness
- Cyber Security Prevention
- Data Security Compliance
- Computer Forensics
- Risk Analysis
- Physical Security
- System Security Threats
- Types Of Attacks
- Security Assessments
- Cryptography

[View course](#)



Stress free course payments... stress free learning

What is course finance?

We understand it can be difficult to pay your course fees in one go. That's why we've allowed our students to spread the cost of their training over a manageable 12 month period. There's no interest or charges! We just divide the cost of your course over 12 monthly payments, and that's all you pay! To apply for course finance, you'll need to complete an application. This can be done in person at our office in London, or over the phone.

How does it work?

The course finance option is only available for Career Courses. Once you've been approved, you must pay the first installment upfront to begin your course – if you wish to enrol. Payments will be taken automatically for the remaining 11 months by direct debit or recurring card payment.

Part of the application process involves being credit checked. Once you complete the form, it takes around 48 hours (during the week) to get the results. If you're not certain if you have a good credit score, you can check using [ClearScore](#) without it affecting your current credit score or credit history.

You'll also need to confirm that you can afford the monthly repayments. This involves answering a few questions, mainly around your expenses. Before you start the application process, it's a good idea to sit down and work out your expenses on paper. That way you'll be ready with the answers.



[Click here to apply](#)

What next?

If you would like to go ahead and apply for course finance, then complete the contact form by clicking the button above. One of our team will be in touch to go through the application with you. Only complete this form once you have decided to enrol on your chosen Career Course and would like to pay for this using the finance scheme. You'll be required to sign the application form online. By doing this, you'll be committed to the agreement and will be required to pay the monthly payments for your course.

Once you've completed your application, you'll receive a few emails. These include confirmation of your direct debit setup, and a copy of your agreement. You'll also need to submit proof of ID and address. This is normally done before you sign the agreement. You can take a picture of these and upload them during the application.

Get experience

Practice on real IT equipment online

Because many IT jobs take place at the virtual level (i.e. behind a keyboard and mouse), the experience you'll gain through a practice lab is very similar to experience you'll gain in the workplace. Consequently many employers regard practice lab experience as a valued asset on a CV.

The hands-on live practice labs allow you to experience practical application of course concepts in authentic environments without purchasing expensive software or equipment. These lab environments allow you to try out your new skills as you learn. Access is simple. There is no need to visit a lab center. All practice labs can be accessed online from the comfort of your home or office 24/7, 365 days a year.

Practice Lab features and benefits include:

- ✓ Practice anywhere, any time – 24/7 online access with no software needed
- ✓ Easy to follow step-by-step instructions to guide you through your practice exercises
- ✓ Experiment and practice concepts with zero hassle and zero risk with no boundaries
- ✓ Access to REAL equipment with no restrictions and full administrator privileges in real time
- ✓ The most authentic experience possible in a lab environment with real-world scenarios and exercises
- ✓ Retain your knowledge and feel confident in your new skills by practicing as you learn
- ✓ Pro-active and comprehensive support services will assist you in resolving any technical issues you encounter connecting to your practice labs
- ✓ Upon completion of your practice lab exercises, you will be sent a certificate to display your total hours of hands-on practical experience to show employers



Contact Us



Address

11th Floor
Beaufort House
15 St Botolph Street
London, EC3A 7BB



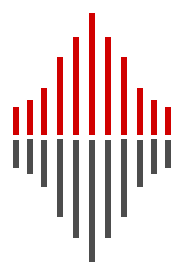
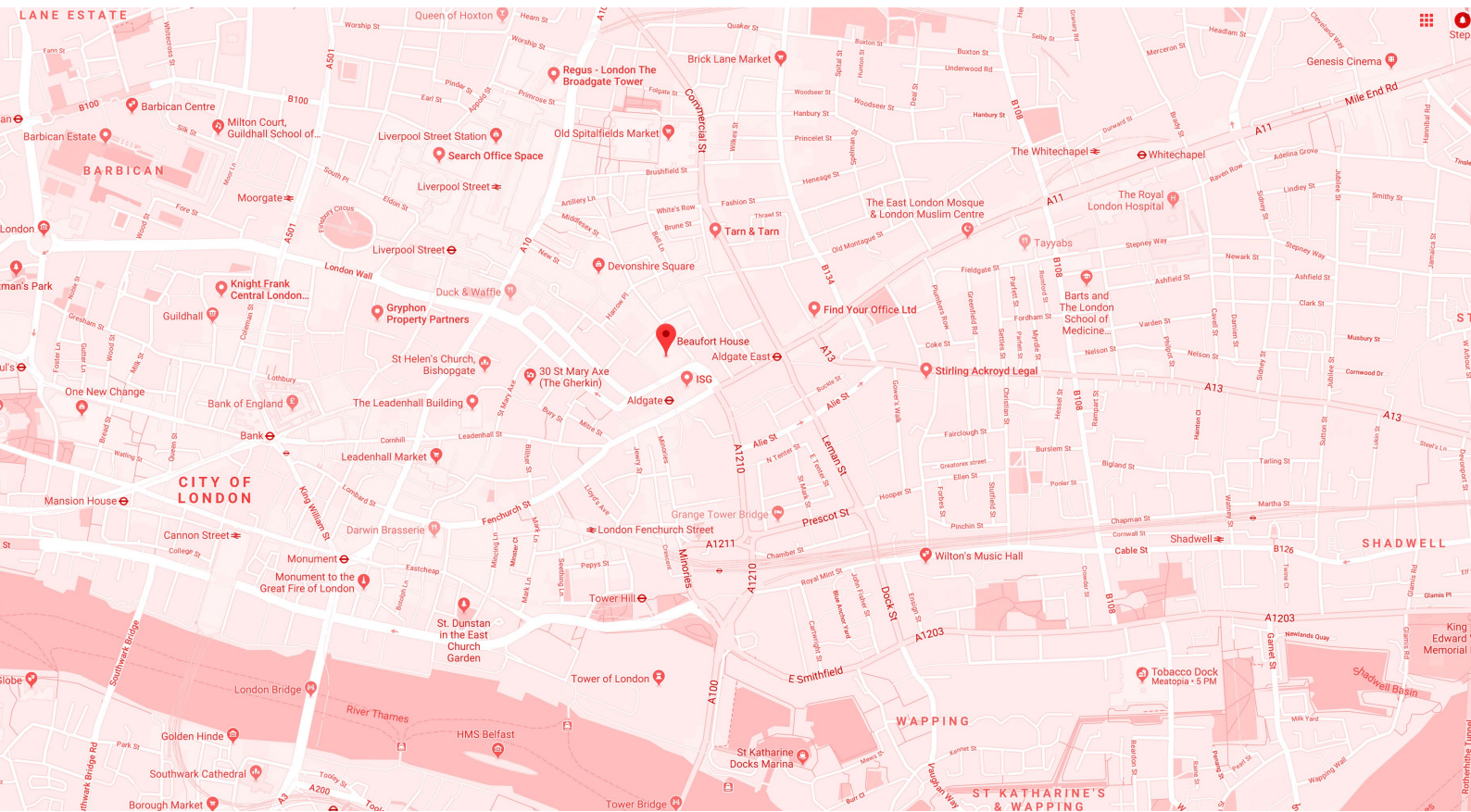
Phone

020 7183 8790



Email

support@redbridgecourses.com



REDBRIDGE

redbridgecourses.com

Opening hours

Mon-Fri, 9am-6pm